

# İPLIKTEN YUVA

Community Support Hub

İplikten Yuva is a community support hub for individuals displaced by the February 2023 Türkiye earthquakes who are now navigating a long, multi-year recovery while working to rebuild stability, routine, and belonging. Located in Yenimahalle, Ankara, the project brings together essential services including psychosocial support, educational support, child protection, and legal aid within one integrated and welcoming setting. The concept, "a home woven from threads," shapes the project, viewing each displaced person as a distinct thread shaped by different experiences, needs, and strengths, while the hub becomes the loom that gently reconnects these lives through care, routine, and access to support.

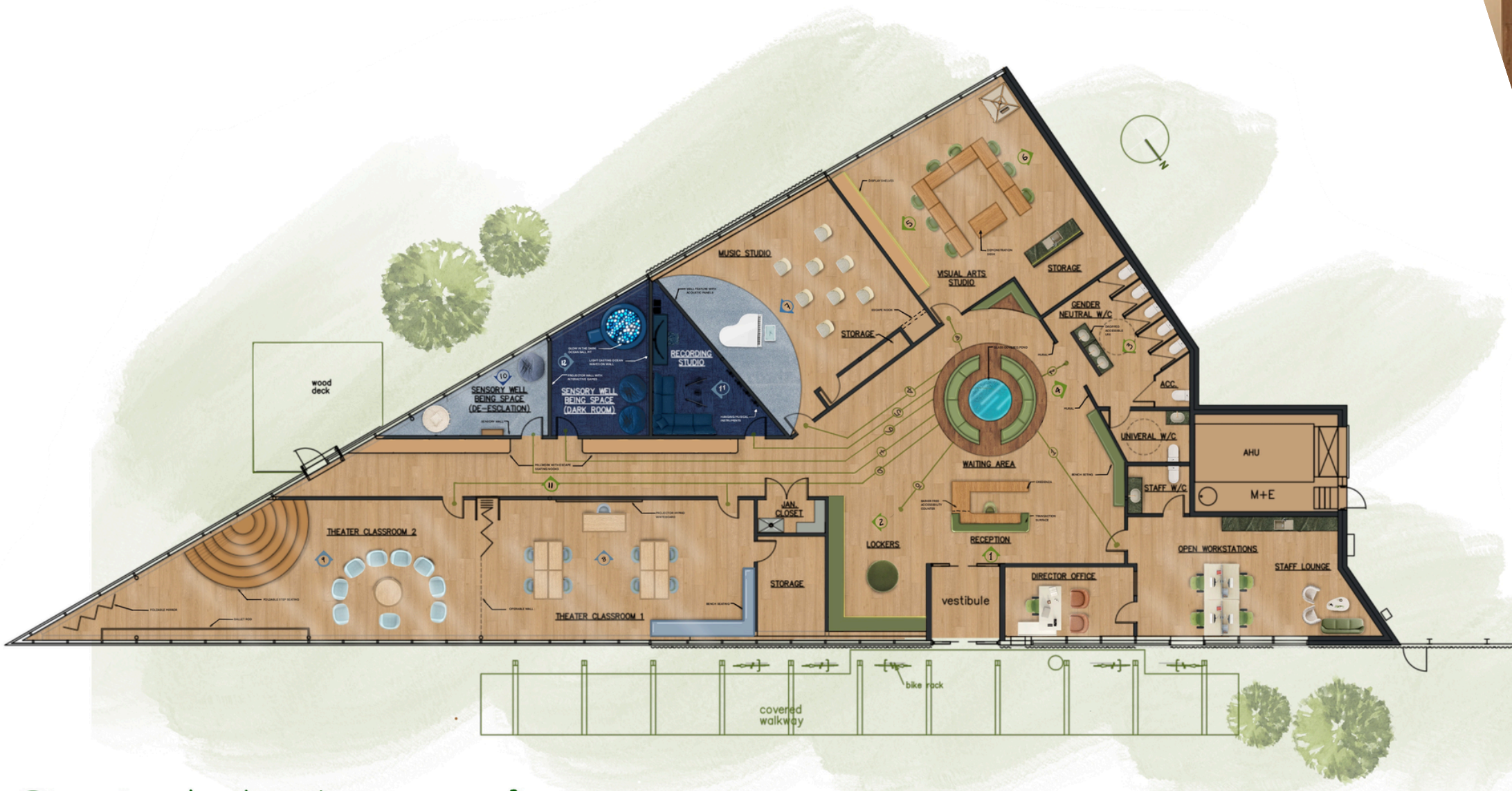
From this concept, the design intent is to create a space that avoids institutional harshness and instead offers warmth, dignity, and emotional safety. The project therefore prioritizes a home-like atmosphere through soft, layered materials and lighting, supports personal agency through privacy gradients and user control, and encourages healing and reintegration through spaces that balance quiet retreat with opportunities for connection. It also integrates culturally relevant design elements to create a stronger sense of familiarity, identity, and belonging within the space. In this way, İplikten Yuva is not just a support centre, but a home where diverse threads can be gently woven back into steadiness, belonging, and resilience.



1 İPLIKTEN YUVA LEVEL 1 FLOOR PLAN



2 İPLIKTEN YUVA LEVEL 2 FLOOR PLAN



1 ecotonal cultural arts center floor plan



Ecotonal Cultural Arts Centre is located in Nanaimo, BC, Canada, designed for youth with Autism Spectrum Disorder (ASD) ages 8-18. The goal was to create a calm, welcoming environment that supports sensory comfort, autonomy, and authentic self-expression, offering both gentle social connection and quieter spaces for regulation. The project is grounded in the idea of an "ecotone," the transition zone where two ecosystems meet and overlap, using the gradient from land to sea as the guiding design metaphor.

This concept is translated into a sensory journey through the building with the warmer "land" zones use of grounded materials such as woods and greenery to reinforce comfort and familiarity, while the "sea" zones shift toward cooler palettes and softer forms to create a lighter, more serene atmosphere. A clear and predictable circulation system supports ease of navigation, and adjustable furniture, lighting, and shading allow users to gain a sense of control over their environment and support overall inclusivity.

